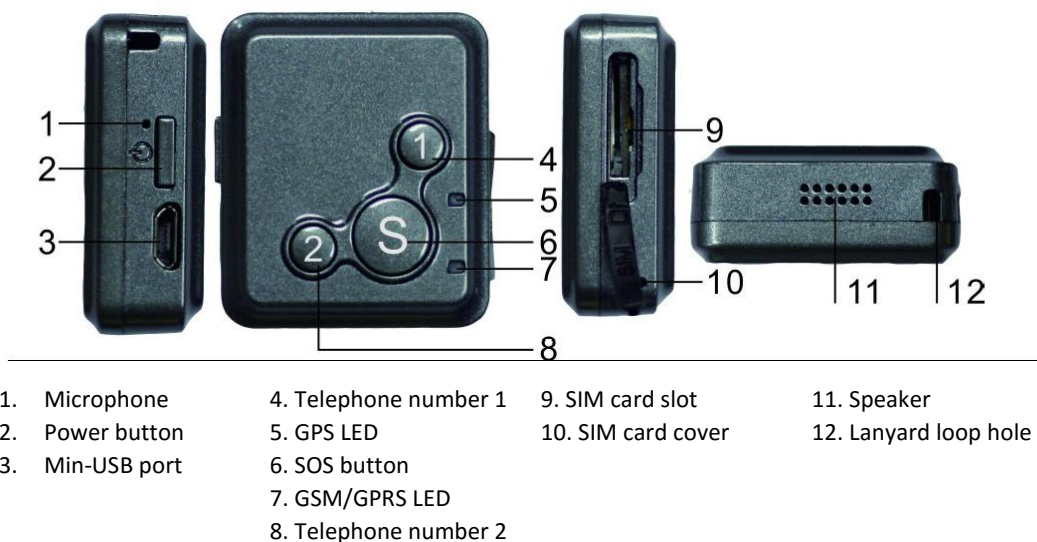




RF-V16 GPS/GSM/GPRS Tracker

User Guide – Web based setup



INITIAL SETUP

1. Unpack the box and check the contents agree with the following:
 - a. 1 x RF-V16 tracker unit
 - b. 1 x USB power supply cord
 - c. 1 x USB plug connector
2. Purchase a micro-SIM card from your preferred mobile network operator and credit with a minimum of R10.00. Ensure data is loaded as well as voice minutes.
3. Activate the SIM card from a mobile phone before inserting it into the tracker unit.
4. Ensure that the tracker unit is powered off before inserting or extracting the sim card at any time.
5. Insert the sim card into your RF-V16 tracker as follows:



6. To release the sim card, press it in again and it will spring out.

7. Connect the power supply cord to the plug connector.
8. Insert the plug connector into a standard 15amp plug circuit and let it charge overnight

POWER ON/OFF and CHARGING

1. Hold down the power button for 3 seconds.
2. A magical tune is played at start-up.
3. A “progressive build-up” tune is played when shutting down.
4. When you plug in the charger, the device will shut down without playing a tune, then it will restart, play the magical tune and start charging.
5. The light on the charger is red when charging and green when fully charged.
6. If you have a tune constantly playing while charging, this is because the device is rebooting over and over. To prevent this, make sure your SIM card is installed while charging.
7. After charging, a full charge can be achieved in about 2 hours, switch the tracker unit ON by pressing button 2.
8. A short melody will be played by the tracker and it will start searching for GSM/GPRS signals as well as a GPS signal.
9. If you are inside a building the GSM/GPRS button will begin flashing an orange LED at 4 second intervals.
10. The GPS blue LED will begin flashing at 2 second intervals
11. Once you take the device outside the two LED's will flash simultaneously every 4 seconds.

The GPS tracker can be followed anywhere either by using SMS, web site (www.gps123.org) or an Android/IOS app called TRACKANYWHERE

12. The device is now ready to be configured.

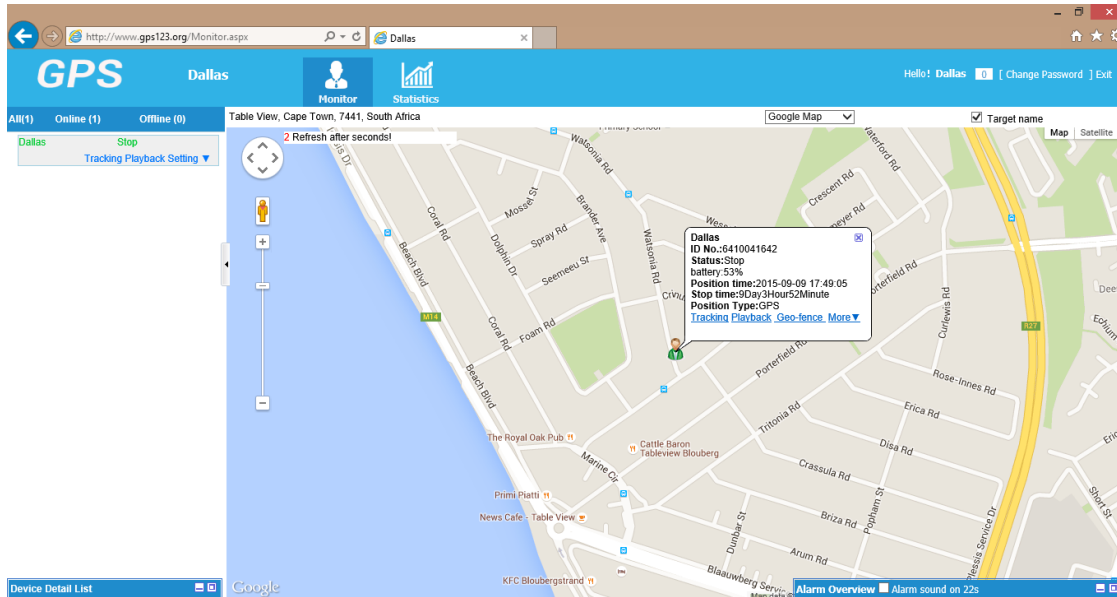
CONFIGURING VIA THE WEB

1. Open your Internet browser and enter the following URL;
www.gps123.org

PLEASE NOTE THAT THIS IS A FREE SERVICE AND THAT THERE ARE NO MONTHLY CHARGES. THE ONLY CHARGE WILL BE TO TOP UP THE SIM CARD WHEN THE CREDIT ON THE CARD RUNS OUT.

2. On the top right hand section of the screen, click on the UK flag to change the site to display text in English.
3. On the Login Banner, make sure the ID No. button is clicked on (Do not click on the Account button).
4. On the rear of your tracker device you will find two numbers, an ID Number and an IMEI number. The ID Number is 10 digits long. The IMEI number is 14 digits long with the last 10 digits being the same as the serial number.

5. Enter the tracker ID No. of your unit (e.g 1234567890) and then enter the PASSWORD which is set at 123456 on delivery. This can be changed later.
6. Once you have logged in successfully to www.gps123.org, the screen will show an information bubble providing you with details of the device name, device ID, status, position time location, stop time and position type.



In the above example, you will notice that the position type is given as GPS. GPS positioning is only accurate within 1 to 3 meters when the tracker is in the open and not in a building. This is because GPS signals cannot penetrate a building and an external antenna is needed.

When the device is inside a building, the Position type will indicate GSM/GPRS and will only be accurate up to 200 meters. This is because GSM/GPRS signals are tracked to the nearest cell phone mast from which location data can be obtained.

1. At the top left of the map display you will see a set of commands in blue type: Tracking Playback Setting.
2. Click on 'Setting' and then 'Device Info'
3. Enter a Target Name (preferably name of the person carrying the tracker unit), SIM card info, the tracker unit's Mobile Telephone (TelMob) number and a contact name. Tick the LBS box.

Device Info

ID Number: 6410041642 Activation Time :2015-05-28

Type: V16 Expired Time:2016-07-06

 User Expired Time:2016-07-06

Target Name: Dallas filter LBS: ☒

SIM Card NO.: 500000002675086 Overspeed(Km/h): 60.00

License Plate No.: Tel/Mob: 0766847519

Contacts: Fuel/100km: 0

Timezone: (UTC+02:00) Harare, Pretoria

Icon:

Remark :

Save Cancel

4. Fill in the other details if you want but these are not necessary. The overspeed limit can however be useful if you suspect that the driver of the vehicle transporting the tracker holder is a careless or reckless driver.
5. Save the information you have entered and go back to 'Settings'. Click on 'Device Setting' followed by clicking on the 'Set Command' box. You will be presented with the following screen display:

Device setting

Command Classify: Control Command Set Command

Command Type :

Target : Dallas

Password :

Please confirm the account before sending

Save

Upload Interval
master No.(SOS1)
SOS2
Set SOS number
Indicator setting
SMS language
Anti disturbance model
Answer model
远程升级

You can now make changes to any of the parameters in the box:

6. **Upload interval:** By default the device will automatically record and upload its location every 10 minutes. To maximise battery life, the GPS chip inside will 'sleep' in between those 10 minute intervals, waking for 30 seconds to obtain and upload a position, before going back to sleep.

7. Specify the time in minutes as to how often you want the device to update it's location data. For example, you might want to track your child on the way to school so set the interval at 1 minute. Once your child is at the required destination you can change the interval to say 20 minutes.
According to the manufacturers, a frequency of 10 minutes will make the battery last approximately 50 hours.
8. **SOS1:** Enter the phone number of the 1st contact person, this will probably be one of the parents' phone number. The child can use either SOS1 or SOS2, to call and speak to the person owning that phone number.
9. **SOS2:** Enter the phone number of the other parent or someone else you trust.
10. **Set SOS number:** You can enter up to 5 phone numbers here. The idea behind the SOS button is that if the child is confronted in a threatening way, he or she will hold down the SOS button for at least 5 seconds. A SMS will immediately be sent to all 5 numbers indicating the child needs help at a specific location.
11. **Indicator Setting:** ON or OFF. Factory default is ON.
12. **SMS Language:** Choose from CHINESE, ENGLISH or FRENCH
13. **Anti-disturbance mode:** For use when placed in a fixed position e.g. as in a car tracking device. SMS will be sent to emergency numbers if an attempt is made to remove tracker from it's fixed position.
14. **Answer mode:** Choose from one of the modes: Push button answer default), hands free auto answer or loudspeaker mute auto-answer.